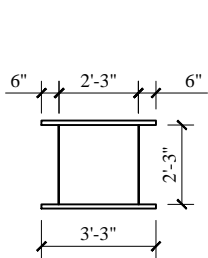
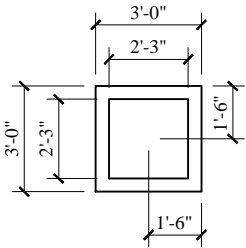


**CURB ROOF FLASHING
PLAN VIEW**

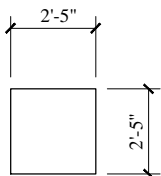
**CURB ROOF FLASHING
3D**



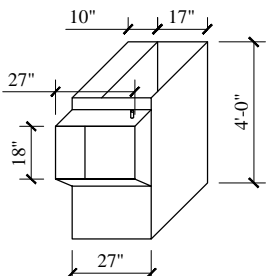
TYPICAL FLOOR FRAME



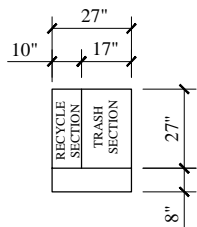
FLOOR RETAINING FLANGE



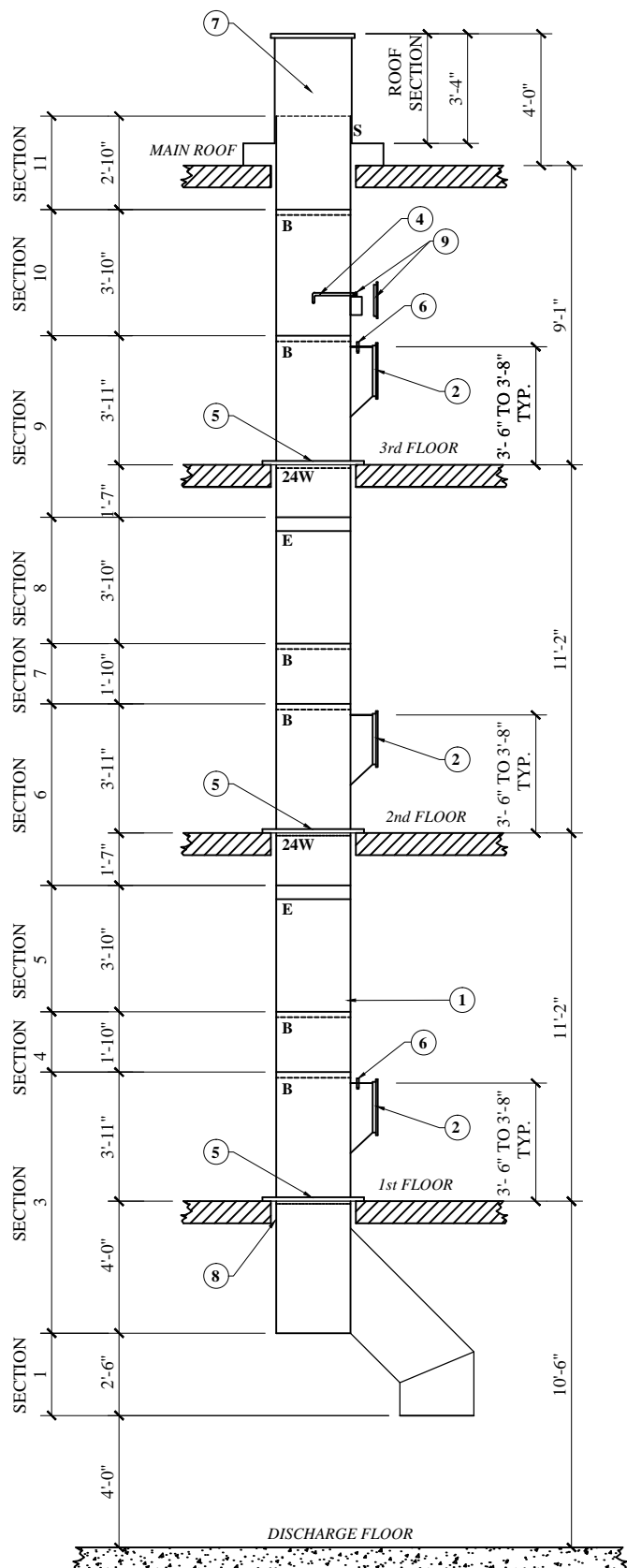
**ROUGH FLOOR
OPENING**



**DUO RECYCLING
INTAKE SECTION
(ISO VIEW)**



**DUO RECYCLING
INTAKE SECTION
(TOP VIEW)**



NOTES:

- CHUTE MEETS OR EXCEEDS ALL **NFPA-82** CODE.
- ALL CHUTES TO HAVE CONTINUOUSLY WELDED VERTICAL SEAMS.
- PARTITIONS AROUND CHUTE NOT TO BE ERECTED UNTIL AFTER CHUTE INSTALLATION.
- ROUGH OPENINGS, PLUMB AND PROPER SIZES AND LOCATIONS SHALL BE PROVIDED BY OTHERS .
- MISCELLANEOUS STEEL TO HAVE SHOP COAT OF PROTECTIVE ENAMEL.
- FOR FURNISH ONLY PROJECTS, CONTRACTOR TO VERIFY AND APPROVE ALL DIMENSIONS ON THESE DRAWINGS WITH CONDITIONS ON THE JOB SITE. CHUTES INTERNATIONAL WILL NOT BE RESPONSIBLE FOR DEVIATIONS FROM THE DRAWING ONCE APPROVED TO FABRICATE.
- FOR FURNISH AND INSTALL PROJECTS, CHUTES INTERNATIONAL SHALL VERIFY ALL FLOOR HEIGHTS AND FIELD CONDITIONS PRIOR TO FABRICATION.
- IF FLOOR FRAMES ARE TO SIT ON SUB FLOORS, PLEASE PROVIDE INFORMATION REGARDING THICKNESS OF FINISHED FLOOR TO MAINTAIN REQUIRED DOOR HEIGHT.
- DUE TO MOVEMENT WHICH MAY OCCUR AFTER INSTALLATION, THE FINAL RESPONSIBILITY FOR ENSURING THAT DOORS ARE SITTING FLUSH TO WALLS MUST LIE ON TRADES CONSTRUCTING THESE WALLS.
- THIS DRAWING IS THE PROPERTY OF CHUTES INTERNATIONAL MANUFACTURING AND IS LOANED ON THE CONDITION THAT IT IS NOT TO BE REPRODUCED AND IS NOT TO BE USED IN WHOLE OR PART TO FURNISH INFORMATION FOR THE MAKING OF DRAWINGS OR CHUTE SECTIONS.
- LINTELS, IF REQUIRED ABOVE DOORS, BY OTHERS.
- ALL SECTIONS OF CHUTE CAN BE ROTATED AS NEEDED, BUT MUST MAINTAIN CONSISTENT RISER CENTER LINE. (SEE ARCHITECTURAL DRAWINGS FOR DOOR ORIENTATION).
- OFFSETS AND CHUTE SIZE REDUCTIONS REQUIRE APPROVAL OF AUTHORITY HAVING LOCAL JURISDICTION (FIRE MARSHALL OR BUILDING CODE INSPECTOR) RESPONSIBILITY OF OTHERS.
- "W" JOINTS ARE WELDED JOINTS.
- "B" JOINTS ARE BEADED JOINTS.
- "C" JOINTS ARE JOINTS WITH CLIPS.
- "E" JOINTS ARE EXPANSION JOINTS.
- "S" JOINTS ARE VENT JOINTS ZAP SCREWED.
- "BC" JOINTS ARE JOINTS BEADED WITH CLIPS.

- | | |
|----------|-------------------------------------------------------------------------------------------------------------------------------------------------------------------------------------------------------------------------------------------------------------------------------------|
| 1 | Chute riser to be 27"x27" square fabricated from 16 ga. aluminized steel. |
| 2 | Intake door 27" wide x 18" high, bottom hinged, noiseless, self-closing, self-latching, stainless steel front, back and skirt, bearing a UL label 1-1/2 hour, max. temp. rise 250°F., 30 min. Stainless steel trim. ADA lever handle with lock and 2 keys. |
| 3 | 3/4" Flushing spray head ready for connection by others. |
| 4 | Chute support, by means of clips welded at quarters, to sit on angle iron type floor frame. Steel to be 3/16" thick minimum. (Structural support of chute floor frame to be provided by others). |
| 5 | 165°F sprinklers to be furnished only; installation, hook-up by others. (Sprinklers are at: 3rd & 1st floor intakes). |
| 6 | Heavy gauge aluminum vent extending full diameter above the roof (per NFPA-82: 2009). Aluminum hinged rain cap top with 1" air space and holdown clips. Heavy gauge aluminum w/ flat, pitched or curbed flashing, as required. |
| 7 | 1 Floor Retainer Flange provided above discharge. |
| 8 | Manual disinfecting unit w/ proportioning valve at flushing spray head above top intake. 15" x 15" right side hinged access door bearing UL label, ADA locking lever handle with 2 keys. Installation by others. (Vacuum breaker, control valve and back-flow preventer by others.) |

THESE DRAWINGS AND SPECIFICATIONS ARE THE PROPERTY OF CHUTES INTERNATIONAL AND SHALL NOT BE REPRODUCED OR COPIED OR USED AS THE BASIS FOR THE MANUFACTURE OR SALE OF APPARATUS WITHOUT PERMISSION. ***DO NOT DUPLICATE***

DUO RECYCLE CHUTE ELEVATION DRAWING

1ST SUBMITTAL		
RESUBMITTAL		
APPROVED FOR FAB.		
Job Name:		
Customer:		
City:		
State:		
Item:	DUO RECYCLE CHUTE	
PO No.		JOB No.

CHUTES INTERNATIONAL MANUFACTURING	Phone: (301) 753-4100
	Toll Free: 800-88-CHUTE
	Fax: (301) 753-4109
	4400 Austin Lane
	White Plains, MD 20695
	WWW.CHUTES.COM