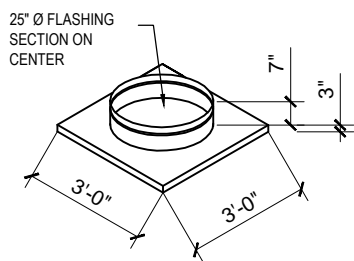
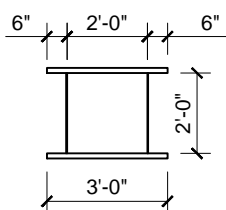


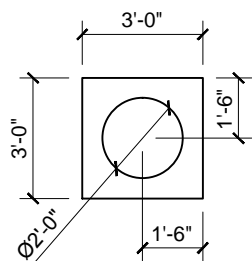
**CURB ROOF FLASHING
PLAN VIEW**



**CURB ROOF FLASHING
3D**



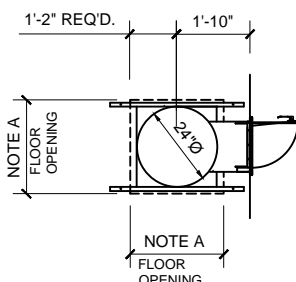
TYPICAL FLOOR FRAME



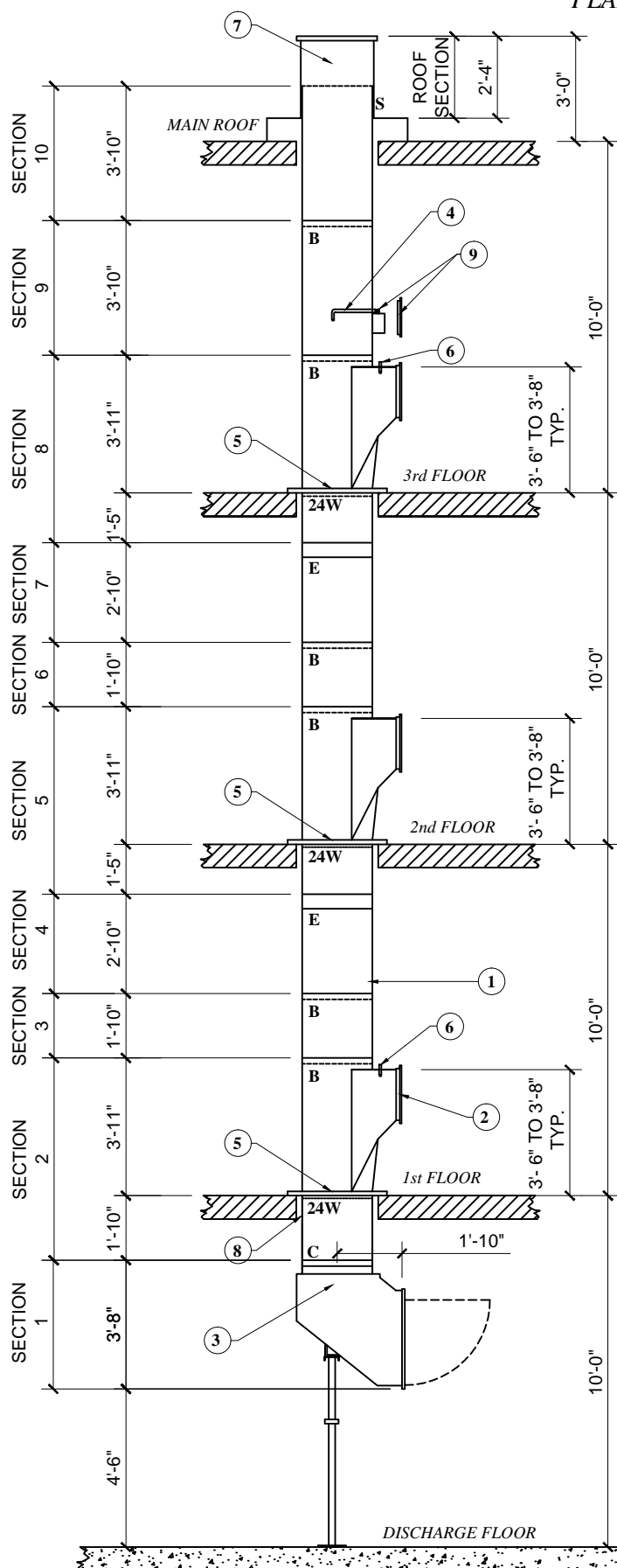
FLOOR RETAINING FLANGE

NOTES:

- A- 28" CLEAR FLOOR SLAB OPENING (INSIDE SHAFT) REQUIRED.
- B- VERIFY IN FIELD FLOOR OPENING DIMENSION AND COORDINATE FLOOR FRAME LEGS.
- C- ROUND FLOOR SLAB OPENING PREFERABLE.
- D- CLEAR INSIDE BACK WALL OF SHAFT TO FACE WALL SHOULD BE MIN. 40" AND FROM SIDE TO SIDE 28".



**TYPICAL INTAKE
PLAN**



- ** NOTE:**
- 24"Ø: 10 OR MORE FLOORS REQUIRES DOUBLE PEDESTAL
 - 30"Ø: 8 OR MORE FLOORS REQUIRES DOUBLE PEDESTAL

NOTES:

- CHUTE MEETS OR EXCEEDS ALL **NFPA-82** CODE.
- ALL CHUTES TO HAVE CONTINUOUSLY WELDED VERTICAL SEAMS.
- PARTITIONS AROUND CHUTE NOT TO BE ERECTED UNTIL AFTER CHUTE INSTALLATION.
- ROUGH OPENINGS, PLUMB AND PROPER SIZES AND LOCATIONS SHALL BE PROVIDED BY OTHERS.
- MISCELLANEOUS STEEL TO HAVE SHOP COAT OF PROTECTIVE ENAMEL.
- FOR FURNISH ONLY PROJECTS, CONTRACTOR TO VERIFY AND APPROVE ALL DIMENSIONS ON THESE DRAWINGS WITH CONDITIONS ON THE JOB SITE. CHUTES INTERNATIONAL WILL NOT BE RESPONSIBLE FOR DEVIATIONS FROM THE DRAWING ONCE APPROVED TO FABRICATE.
- FOR FURNISH AND INSTALL PROJECTS, CHUTES INTERNATIONAL SHALL VERIFY ALL FLOOR HEIGHTS AND FIELD CONDITIONS PRIOR TO FABRICATION.
- IF FLOOR FRAMES ARE TO SIT ON SUB FLOORS, PLEASE PROVIDE INFORMATION REGARDING THICKNESS OF FINISHED FLOOR TO MAINTAIN REQUIRED DOOR HEIGHT.
- DUE TO MOVEMENT WHICH MAY OCCUR AFTER INSTALLATION, THE FINAL RESPONSIBILITY FOR ENSURING THAT DOORS ARE SITTING FLUSH TO WALLS MUST LIE ON TRADES CONSTRUCTING THESE WALLS.
- THIS DRAWING IS THE PROPERTY OF CHUTES INTERNATIONAL MANUFACTURING AND IS LOANED ON THE CONDITION THAT IT IS NOT TO BE REPRODUCED AND IS NOT TO BE USED IN WHOLE OR PART TO FURNISH INFORMATION FOR THE MAKING OF DRAWINGS OR CHUTE SECTIONS.
- LINTELS, IF REQUIRED ABOVE DOORS, BY OTHERS.
- ALL SECTIONS OF CHUTE CAN BE ROTATED AS NEEDED, BUT MUST MAINTAIN CONSISTENT RISER CENTER LINE. (SEE ARCHITECTURAL DRAWINGS FOR DOOR ORIENTATION).
- OFFSETS AND CHUTE SIZE REDUCTIONS REQUIRE APPROVAL OF AUTHORITY HAVING LOCAL JURISDICTION (FIRE MARSHALL OR BUILDING CODE INSPECTOR) RESPONSIBILITY OF OTHERS.
- "W" JOINTS ARE WELDED JOINTS.
- "B" JOINTS ARE BEADED JOINTS.
- "C" JOINTS ARE JOINTS WITH CLIPS.
- "E" JOINTS ARE EXPANSION JOINTS.
- "S" JOINTS ARE VENT JOINTS ZAP SCREWED.
- "BC" JOINTS ARE JOINTS BEADED WITH CLIPS.

1	24" diameter chute fabricated from 16 ga. aluminized steel.
2	Intake door 18" wide x 18" high, right side hinged, noiseless, self-closing, self-latching, stainless steel front and back, bearing a UL label 1 1/2 hour, max. temp. rise 250°F., 30 min. Embossed "SOILED LINEN" stainless steel trim. ADA lever handle with lock and 2 keys.
3	Hopper discharge with UL labeled 1 1/2 hour fire rating, max temp. rise 250°F, 30 min., 24" wide x 30" high, top hinged door held open by 165°F fusible link. Door front and back panels are stainless steel. Underside of hopper to be fitted with 2" drain flange for connection by others. Hopper supported with adjustable pedestal.
4	3/4" Flushing spray head ready for connection by others.
5	Chute support, by means of clips welded at quarters, to sit on angle iron and bar grid type floor frame. Steel to be 3/16" thick minimum. (Structural support of chute floor frame to be provided by others).
6	165° F sprinklers to be furnished only; installation, hook-up by others. (Sprinklers are at: 3rd & 1st floor intakes).
7	Heavy gauge aluminum vent extending full diameter above the roof (per NFPA-82: 2009). Aluminum hinged rain cap top with 1" air space and holdown clips. Heavy gauge aluminum w/ flat, pitched or curbed flashing, as required.
8	1 Floor Retainer Flange provided above discharge.
9	Manual disinfecting unit w/ proportioning valve at flushing spray head above top intake. 15" x 15" right side hinged access door bearing UL label, ADA locking lever handle with 2 keys. Installation by others. (Vacuum breaker, control valve and backflow preventer by others.)

THESE DRAWINGS AND SPECIFICATIONS ARE THE PROPERTY OF CHUTES INTERNATIONAL AND SHALL NOT BE REPRODUCED OR COPIED OR USED AS THE BASIS FOR THE MANUFACTURE OR SALE OF APPARATUS WITHOUT PERMISSION. ***DO NOT DUPLICATE***

**TYPICAL LINEN CHUTE
ELEVATION DRAWING**

1ST SUBMITTAL		
RESUBMITTAL		
APPROVED FOR FAB.		
Job Name:		
Customer:		
City:		
State:		
Item:	LINEN CHUTE	
PO No.		JOB No.

CHUTES
INTERNATIONAL
MANUFACTURING

Phone: (301) 753-4100
Toll Free: 800-88-CHUTE
Fax: (301) 753-4109
4400 Austin Lane
White Plains, MD 20695
WWW.CHUTES.COM