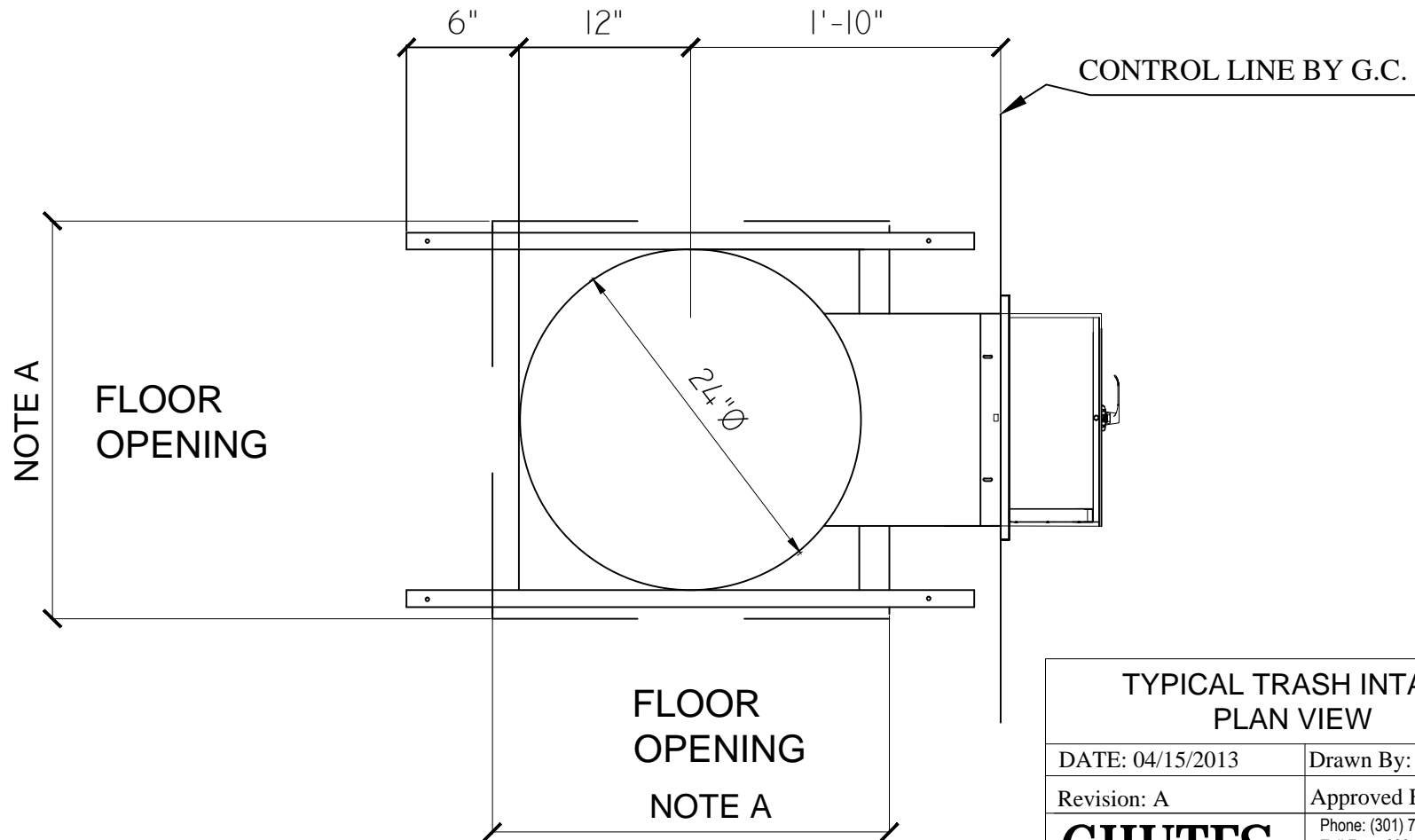


NOTES:

A- 30" CLEAR FLOOR SLAB OPENING (INSIDE SHAFT) REQUIRED. (6" + CHUTE DIA.)

- VERIFY IN FIELD FLOOR OPENING DIMENSION AND COORDINATE FLOOR FRAME LEGS .
- ROUND FLOOR SLAB OPENING PREFERABLE.
- CLEAR INSIDE BACK WALL OF SHAFT TO FACE WALL SHOULD BE MIN. 40" AND FROM SIDE TO SIDE 30".

THESE DRAWINGS AND SPECIFICATIONS ARE THE PROPERTY OF CHUTES INTERNATIONAL AND SHALL NOT BE REPRODUCED OR COPIED OR USED AS THE BASIS FOR THE MANUFACTURE OR SALE OF APPARATUS WITHOUT PERMISSION. \*\*\*DO NOT DUPLICATE\*\*\*



TYPICAL TRASH INTAKE PLAN VIEW	
DATE: 04/15/2013	Drawn By: KF
Revision: A	Approved By: HSS
<b>CHUTES</b> INTERNATIONAL MANUFACTURING <small>© 2013 CHUTES International</small>	Phone: (301) 753-4100 Toll Free: 800-88-CHUTE Fax: (301) 753-4109 4400 Austin Lane White Plains, MD 20695 WWW.CHUTES.COM