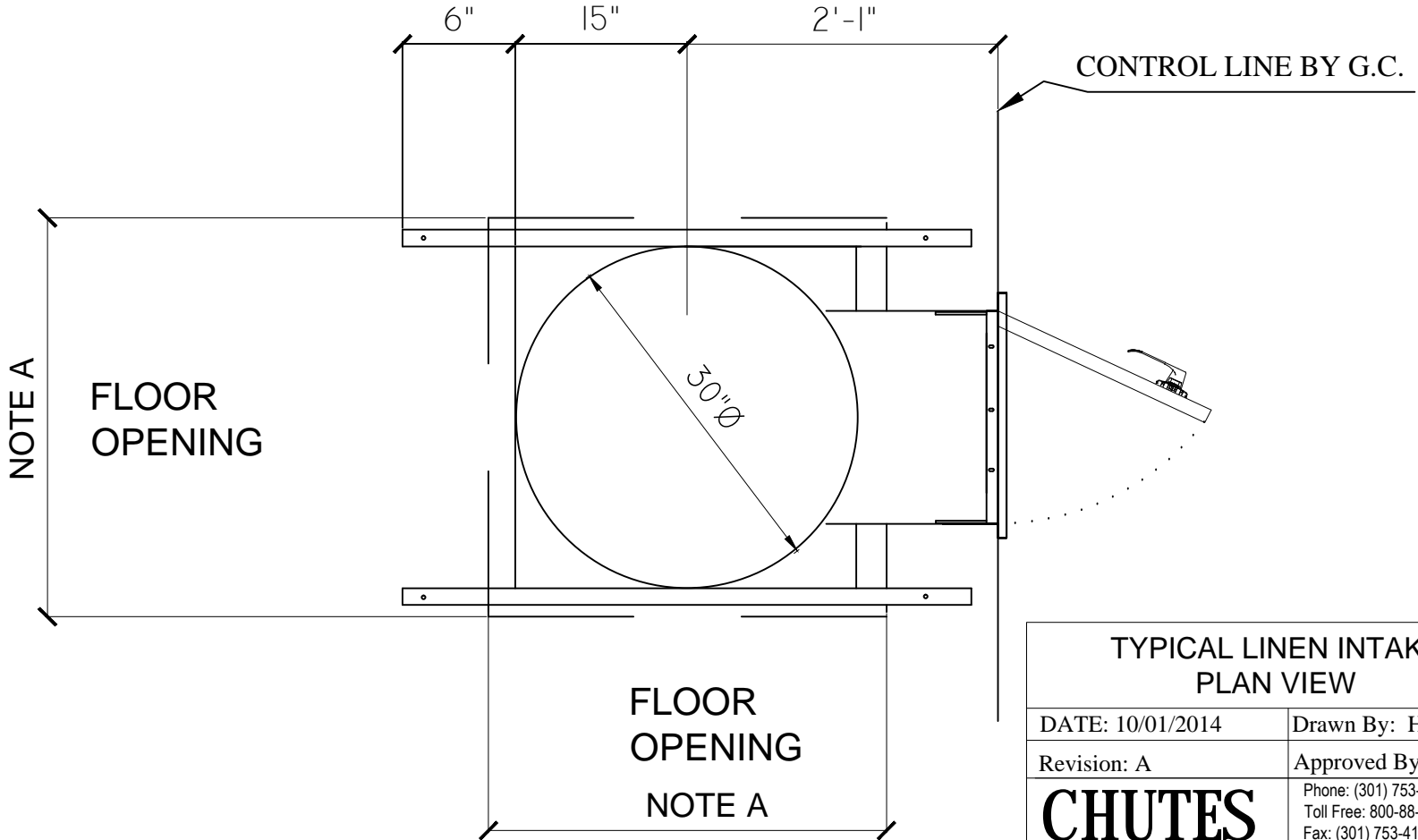


THESE DRAWINGS AND SPECIFICATIONS ARE THE PROPERTY OF  
**CHUTES INTERNATIONAL**  
 AND SHALL NOT BE REPRODUCED OR COPIED OR USED AS THE  
 BASIS FOR THE MANUFACTURE OR SALE OF APPARATUS  
 WITHOUT PERMISSION.  
 \*\*\*DO NOT DUPLICATE\*\*\*

**NOTES:**

A- 36" CLEAR FLOOR SLAB OPENING (INSIDE SHAFT) REQUIRED. (6" + CHUTE DIA.)

- VERIFY IN FIELD FLOOR OPENING DIMENSION AND COORDINATE FLOOR FRAME LEGS .
- ROUND FLOOR SLAB OPENING PREFERABLE.
- CLEAR INSIDE BACK WALL OF SHAFT TO FACE WALL SHOULD BE MIN. 46" AND FROM SIDE TO SIDE 36".



TYPICAL LINEN INTAKE PLAN VIEW	
DATE: 10/01/2014	Drawn By: HK
Revision: A	Approved By: HSS
<b>CHUTES</b> INTERNATIONAL MANUFACTURING <small>© 2013 CHUTES International</small>	Phone: (301) 753-4100 Toll Free: 800-88-CHUTE Fax: (301) 753-4109 4400 Austin Lane White Plains, MD 20695 WWW.CHUTES.COM