



EXTERNAL BROCHURE

CHUTES
PATENTED
CHUTES INTERNATIONAL™

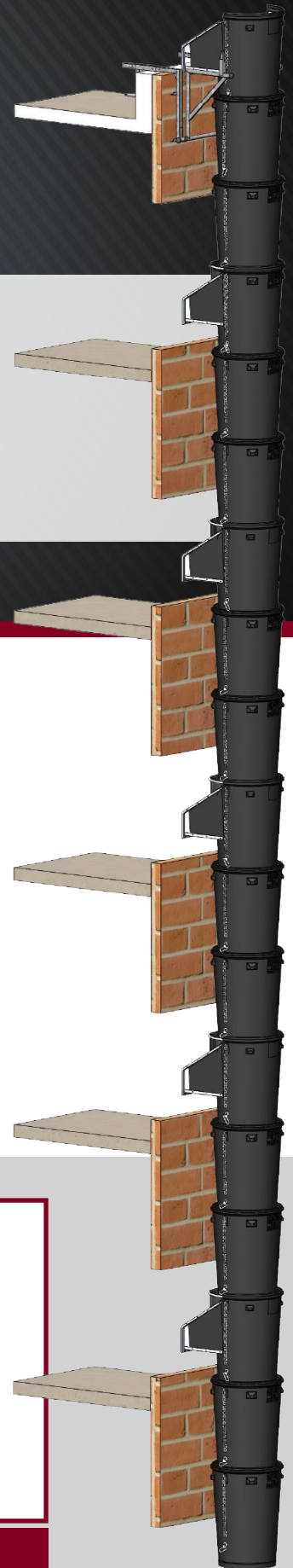
WWW.CHUTES.COM | 1.800.88.CHUTES

33 Industrial Park Drive, Waldorf, MD 20602

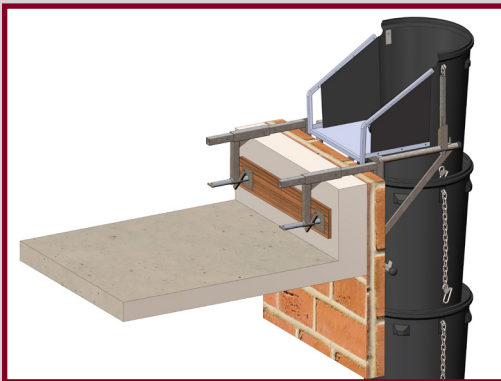
DURACHUTE



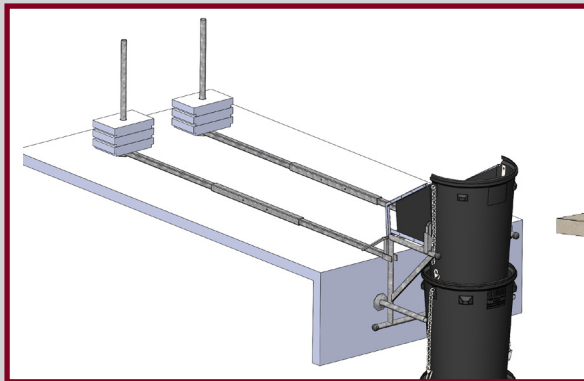
DURACHUTE™ ACCEPT NO IMITATIONS



1. Safe, easy and quick to install
2. Extremely flexible system for all project types including:
 - a. Demolition and Renovation
 - b. Roofing
 - c. New construction
 - d. Marine
 - e. Industrial
 - f. Special Applications like Snow Removal, Sand, Landscaping etc.
 - g. And More...
3. Larger 32" Diameter
4. Delivers rental Revenue with first install in most cases
5. Blow Molded Manufacturing process
6. Made from 100% Virgin HDPE (High Density Polyethylene)
7. Promote your Brand simply by adding your Company Name, website and telephone
8. Fire Retardant Chutes available



Parapet Outrigger



Flat Roof Outrigger

CHUTES
PATENTED
CHUTES INTERNATIONAL™

(800) 88-CHUTE | (240) 448-5000 | CHUTES.COM

Due to TDR Systems, Inc.'s continuous improvement program, it reserves the right to change the design of the items shown here-in without prior notice. ©2018 TDR Systems, Inc.

DURACHUTE™ ... The Ultimate Plastic Chute System.

1. Thicker, More resilient HDPE (high density polyethelyn) for added durability
2. Upper and Lower Reinforcement rings to prevent ovaling or flattening
3. Chains are adjustable to meet each buildings height requirements
4. Each Chain is Heat treated and proof tested rated for 7600lbs
5. Intermediate intakes with safety flaps can be easily placed anywhere along chute
6. All Hardware is Hot Dipped Galvanized to prevent rusting and withstand the elements
7. Sections are made to be stacked for easy storage and transport



**Straight Section
with Chains**



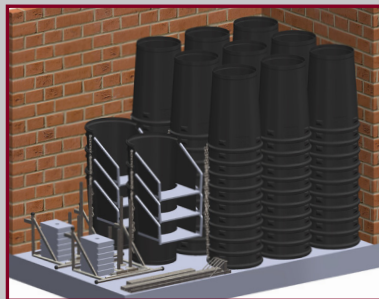
**Intermediate
Intake Hopper
with Retainer Bar
and Safety Flaps**



**Protective Liner
Used In High
Impact Areas**



**Dust
Gaiter**



**Storage
Embedded Stacking Stops**

COMPLETE OUTRIGGER SYSTEMS TO MEET ALL PROJECT TYPES

**BASIC
SUPPORT
FRAME**



**PARAPET/
WINDOW
OUTRIGGER**



**NO TOUCH
PARAPET/
WINDOW
OUTRIGGER**



**SCAFFOLD
OUTRIGGER**



**PITCHED ROOF
OUTRIGGER**



**MANUAL
WINCH
(80' or 150')**



**FLAT ROOF
OUTRIGGER**



**FLAT ROOF
SAFETY
FRAME**



(800) 88-CHUTE | (240) 448-5000 | CHUTES.COM

Due to TDR Systems, Inc.'s continuous improvement program, it reserves the right to change the design of the items shown here-in without prior notice. ©2018 TDR Systems, Inc.

CHUTES
PATENTED
CHUTES INTERNATIONAL™

DURACHUTE



Easily attached to smaller buildings. Made from high-density, heat-treated polyethylene to ensure the safest, most durable plastic construction debris chute in the industry.



CHUTES
PATENTED
CHUTES INTERNATIONAL™

(800) 88-CHUTE | (240) 448-5000 | CHUTES.COM

Due to TDR Systems, Inc.'s continuous improvement program, it reserves the right to change the design of the items shown here-in without prior notice. ©2018 TDR Systems, Inc.

**DURACHUTE
FIRE RETARDANT**

Fire Retardant **DURACHUTE™ PRODUCTS**



**FIRE
RETARDANT
DURACHUTE**

The BFD fire code regulation and UL94 V-0, the most stringent classifications, requiring the shortest individual and total burning times, no flaming drips that ignite cotton, no glowing combustion exceeding 30 seconds after flame removal.

UL94V-0 classified and meets BFD fire code regulations

Larger 32" diameter

Thicker, more resilient HDPE

Multiple attachment systems

Safe, quick & easy to install

All hardware galvanized

Safety flaps for intermediate intakes

(800) 88-CHUTE | (240) 448-5000 | CHUTES.COM

Due to TDR Systems, Inc.'s continuous improvement program, it reserves the right to change the design of the items shown here-in without prior notice. ©2018 TDR Systems, Inc.

CHUTES
PATENTED
CHUTES INTERNATIONAL™

STEEL CHUTES

Let The Debris Removal Professionals Design Your Next Chute System



CHUTES International™
pioneered and revolutionized the
construction debris chute industry.

Our unique, patented, 3' X 3', heavy
duty steel system provides safe, fast
and economical disposal of debris for
new and heavy renovation work. The
debris is directly deposited through
the chute doors at every level and
falls into the containers at street level.

The chute system is designed to
mount through windows (40"
minimum opening) or balconies, open
slabs, scaffold towers, even inside
buildings through 4' x 4' openings or
existing elevator shafts.



**The only debris
removal system
meeting or exceeding
all OSHA standards
and requirements.**



SAFETY

Secure: Lockable doors are provided
at each intake.

Fireproof: Chutes are made of heavy
steel.

Stable: Heavy-duty chute is designed to
withstand just about ANY type of debris.

Strong: Designed, tested, and
constructed to resist impacts from
deposited materials.

Baffling System: Interior baffles slow
down and break apart debris as it falls
through the chute - broken debris takes
up less room in the dumpsters and/or
containers - reducing cost of hauling.

Meets OSHA Standards

CHUTES' Heavy Duty Steel Debris Chute is the ONLY one approved for use on historical buildings!

CHUTES
PATENTED
CHUTES INTERNATIONAL™

(800) 88-CHUTE | (240) 448-5000 | CHUTES.COM

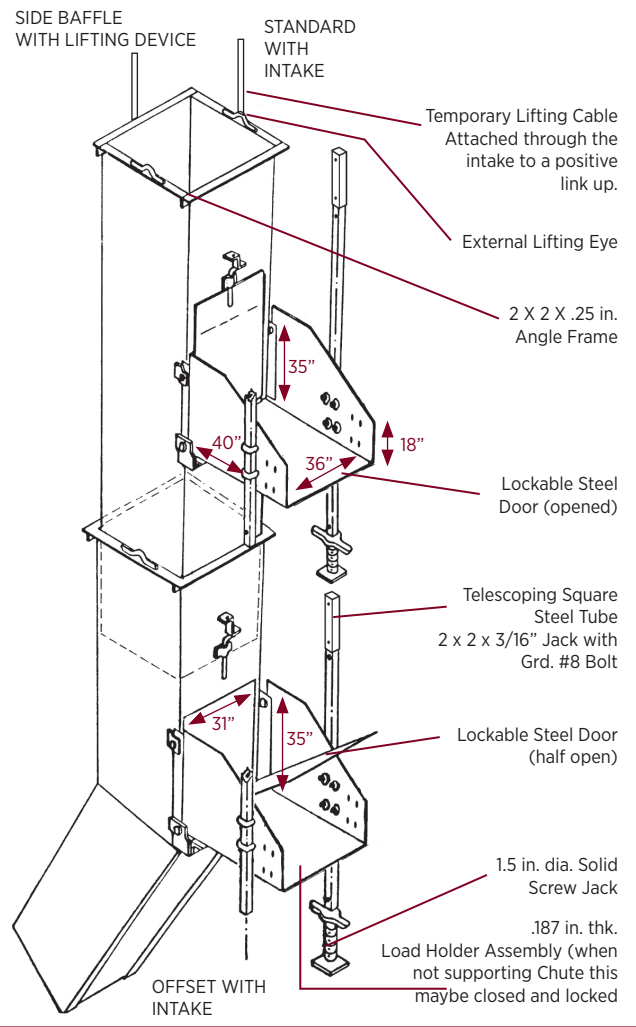
Due to TDR Systems, Inc.'s continuous improvement program, it reserves the right to change the design of the items shown here-in without prior notice. ©2018 TDR Systems, Inc.

STEEL CHUTES



The Nationwide Chutes Supermarket

WE CAN DESIGN A SYSTEM TO MEET YOUR JOBSITE REQUIREMENTS



Steel Debris Chute Section

Chutes Sections:	tapered
Weight Minimum:	1150 lbs. /standard section
Lengths (standard):	sections with intake 14', 12', 8', 4'
Frame Opening:	36" X 36" square
Body Steel Thickness:	minimum .125"
Interior Door (lockable):	.125" thick
Intake Opening:	33.5" X 33.5"
Intake Door (lockable):	.187" thick
Offset Sections:	35 degree incline 1/2" steel bottom plate with or without intake
Interior Baffles:	.25" X 8" X 34.5"
Suspension System:	independently supports itself via adjustable telescoping legs
Screw Jacks:	1.5" diameter X 18" 50.000 # rating

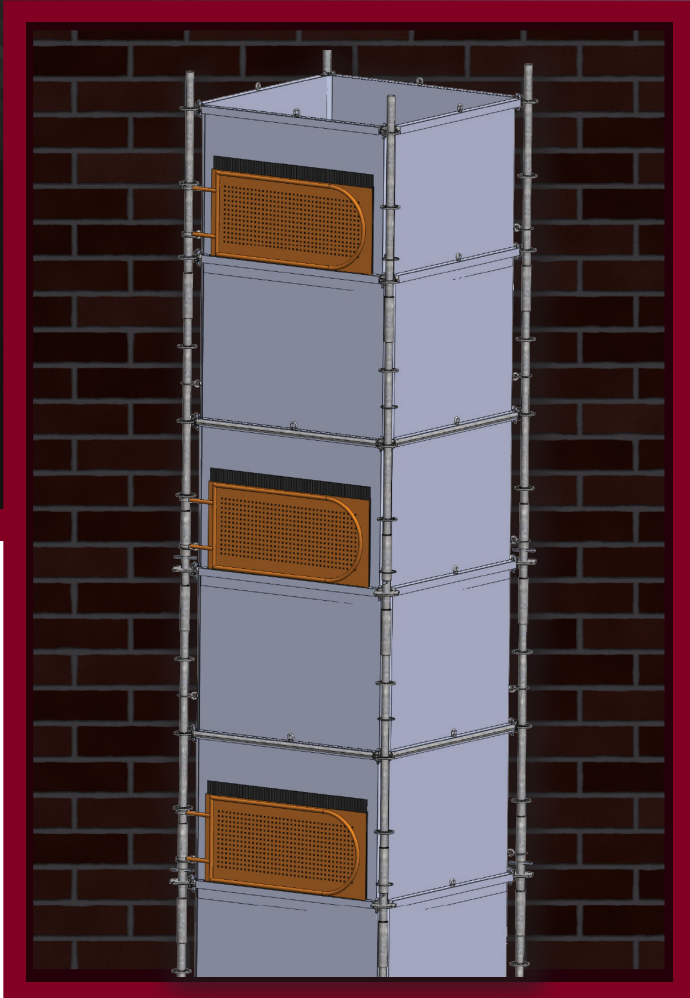
(800) 88-CHUTE | (240) 448-5000 | CHUTES.COM

Due to TDR Systems, Inc.'s continuous improvement program, it reserves the right to change the design of the items shown here-in without prior notice. ©2018 TDR Systems, Inc.

CHUTES
PATENTED
CHUTES INTERNATIONAL™

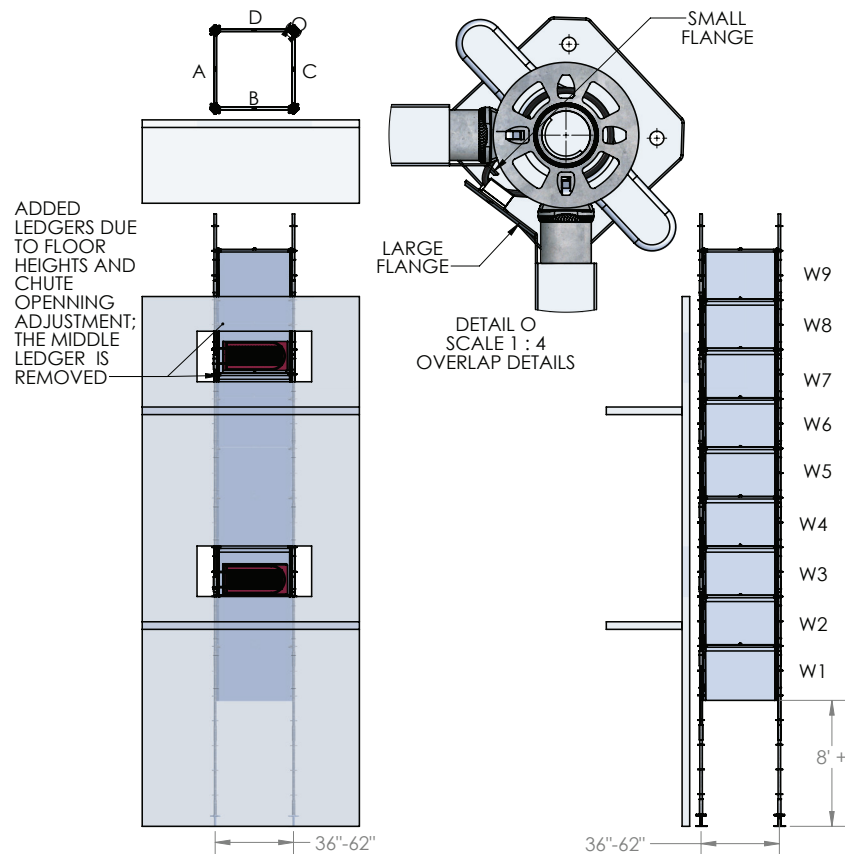
SCAFFOLD TOWER

SAFE AND EASY TO INSTALL



**THERE IS A RIGHT WAY AND
THERE IS A WRONG WAY!**

SCAFFOLD TOWER

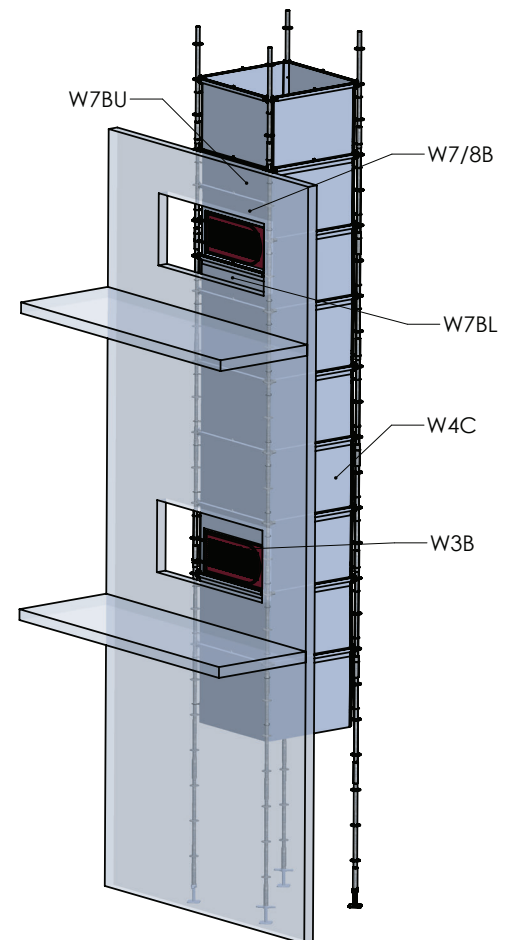


NOTE

- 'A', 'B', 'C', AND 'D' ARE SIDES OF THE SCAFFOLD CHUTE; B IS FRONT/INTAKE DOOR SIDE
- 'W' STAND FOR WALL AND THE NUMBER NEXT TO IT IS ITS LEVEL; W1 = WALL AT LEVEL ONE
- 'U' AND 'L' STANDS FOR HALF SECTION UPPER SIDE AND LOWER SIDE IN A WALL LEVEL

EXAMPLE:

- 'W3B' - THIS IS THE PANEL (WALL MEMBER) AT LEVEL 3 FRONT SIDE OF THE CHUTE. THAT IS THE FIRST INTAKE DOOR BASED ON THIS SAMPLE MODEL.
- 'W7BL'-THIS IS THE LOWER SIDE HALF PANEL (WALL MEMBER) AT LEVEL 7 FRONT SIDE OF THE CHUTE. THAT IS THE FIRST INTAKE DOOR BASED ON THIS SAMPLE MODEL.
- 'W7/8B'-THIS IS THE PANEL (WALL MEMBER) THAT IS BETWEEN LEVEL 7 AND 8 FRONT SIDE OF THE CHUTE. THAT IS THE INTAKE DOOR AFTER HALF SECTION ADJUSTMENT IS DONE.



STEPS OF ASSEMBLY

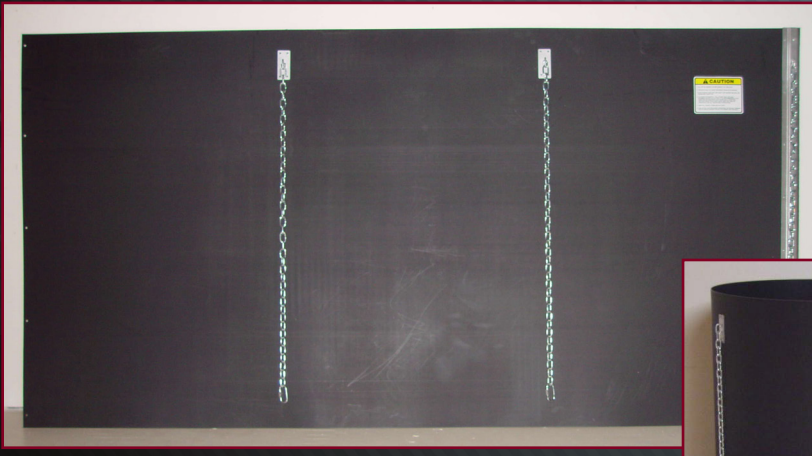
1. PLACE FIRST SET OF STRAIGHT PANELS W1B & W1D
2. PLACE SECOND SET OF STRAIGHT PANELS W2B & W2D
3. PLACE FIRST SET OF FLANGED PANELS W1A & W1C AND SECURE THE PANELS TO THE STANDARDS USING THE PROVIDED BRACKETS AND 9-12 GAUGE WIRE
4. PLACE SECOND SET OF STRAIGHT PANELS W2B & W2D
5. PLACE THIRD SET OF STRAIGHT PANELS W3B (IN THIS MODEL INTAKE PANEL) & W3D, FOLLOWED BY SECOND SET OF FLANGED PANELS ALTERNATING.
6. IN CASE THE FLOOR HEIGHT VARIES TO THE REGULAR SCAFFOLD VERTICAL GRID, WE USE HALF PANELS. WE WILL BE USING ADDITIONAL LEDGERS IN THE MIDDLE OF W7B AND W8B BY REMOVING THE LEDGER BETWEEN THE TWO LEVELS.
7. FOR THE PANNELS , AFTER WE PLACE W6C & W6A, WE WILL PLACE W7BL, W7/8B AND W7D RESPECTIVELY.
8. PLACE W7C & W7A FOLLOWED BY W8BU & W8D. THEN CONTINUE THE REGULAR STEPS 4 AND STEP 5 CONSECUTIVELY.
9. ALL DOOR S CAN BE INSTALLED AFTER FINISHING ALL THE WALL MEMBERS.

(800) 88-CHUTE | (240) 448-5000 | CHUTES.COM

Due to TDR Systems, Inc.'s continuous improvement program, it reserves the right to change the design of the items shown here-in without prior notice. ©2018 TDR Systems, Inc.

CHUTES
PATENTED
CHUTES INTERNATIONAL™

DURAFLAT



CHUTES International™ pioneered the debris chute market with its heavy-duty steel debris chute. In response to industry demand, CHUTES introduced the DURACHUTE™ system, a blowmolded, high-density polyethylene system (HDPE).

Once again, CHUTES responds to industry demand for an economical, light-duty flat chute system with the introduction of the DURAFLAT™.

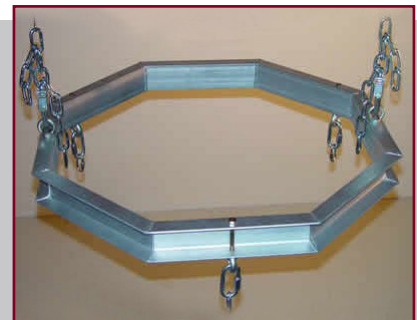
The DURAFLAT™ system stores and ships flat, then can be easily assembled using standard hand tools.

Sections are joined together, by sleeving chutes inside one another and connecting with zinc-plated chains (included). Sections are 4' in height (3'6" useable chute), 1/8" thick, 30" wide and weighs 28lbs. each.



Optional Accessories:

Top hoppers, hangers, winches and other components from the DURACHUTE™ product line can be used in conjunction with the DURAFLAT™ section by using the DURA CONVERTER™



ALUMINUM CHUTES

DURACHUTE™

ALUMINUM

DURACHUTE™

TOP HAT FIRE SUPPRESSION

Patent Pending

ALUMINUM CHUTE



Fireproof; Strong; Durable; Lightweight

Our chutes are designed, tested and constructed to withstand just about ANY type of construction debris

Chute Section w/ Chains (Item #0300)

- Total Length 4'
- Useable Length 3'1"
- Inside Diameter (top) 32"
- Tapers to 28" Bottom
- Shipping Weight of 46 lbs

Intermediate Intake Hopper (Item #0305)

- Regular Intake Hopper with Retainer Bar and Safety Flap Included
- Total Length 4'
- 29"W x 28"H Intake Dimensions
- Hot Dipped Galvanized Steel Components
- Shipping Weight of 77 lbs.

TOP HAT dual purpose system

165 degree fusible link fire suppression sprinkler head

Manual washdown option for dust reduction and chute washing

Easily added to existing DURACHUTE systems

TOP HAT FIRE SUPPRESSION



(800) 88-CHUTE | (240) 448-5000 | CHUTES.COM

Due to TDR Systems, Inc.'s continuous improvement program, it reserves the right to change the design of the items shown here-in without prior notice. ©2018 TDR Systems, Inc.

CHUTES
PATENTED
CHUTES INTERNATIONAL™

CHUTES

PATENTED
CHUTES INTERNATIONAL™

33 Industrial Park Drive, Waldorf, MD 20602

WWW.CHUTES.COM | 1.800.88.CHUTES