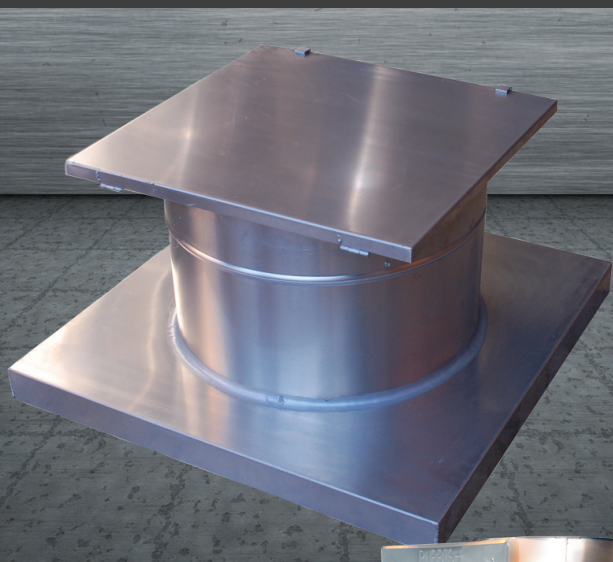


INTERNAL TRASH CHUTES

The ONLY Patented Intake Door on the Market with ALL Stainless Steel Front & Back Panels and Skirts.



Our trash chutes are better looking, longer lasting, easier to clean, and require less maintenance. Our trash chutes are also outfitted with the only intake door on the market with both front and back stainless panels and skirts.

CHUTE MATERIAL

Chutes handling general household or office waste should be made of a minimum thickness of 16 ga. aluminized steel or stainless steel.

INTAKE DOORS

Typical 15" wide x 18" high, hand operated hopper type intake doors, self closing, self latching, noiseless, bottom hinged with 1-1/2 hour 'UL' label; maximum 30-minute 250°F temperature rise. Entire patented door (front & back panels and skirt) in stainless steel finish with ADA compliant lever handle with lock and two keys. Doors are engineered, machined and assembled with no welds. MEA Labeled for New York City.

VENT

Full diameter vent, made of 100% heavy gauge aluminum to eliminate rusting and improve appearance, extending a minimum of 3' (per NFPA) above roof with flashing and metal safety cap.

FLOOR FRAMES

Standard floor frames are 1-1/2" x 1-1/2" x 3/16" steel angle 12" longer than the chute diameter.

STANDARD ACCESSORIES

1/2" NPT sprinkler and 3/4" NPT flushing heads above top intake. Additional 1/2" sprinkler heads at alternate intakes and at first intake as required by NFPA82 code.

CHUTE CONSTRUCTION

Chute sections shall be factory assembled with all seams fully welded. There shall be a minimum of one expansion joint per floor and a flush interior assembled without bolts, rivets or clips. The intake door and frame shall be securely fastened to the intake throats that are formed as an integral part of the chute section. Chute throats shall have a standard dimension of 10" in length. Larger throats can be built to accommodate special job conditions. Chute shall be straight and plumb with no offset.

DISCHARGE

The Accordion Fire Damper spring loaded discharge bears a 1-1/2 hour 'UL' label and is held open by a 165° fusible link assembly. This discharge is intended to provide smoke and fire protection to the chute riser and is not designed to perform as a shut off gate.

Trash Chute Dimensions

Chute Ø	Intake Door Sizes* Width x Height	Accordion Discharge Sizes Width x Length
24" (610mm)	15" x 18" (381 x 457mm)	28" x 32" (711 x 813mm)
28" (711mm)	21" x 18" (533 x 457mm)	32" x 37" (813 x 940mm)
30" (762mm)	21" x 18" (533 x 457mm)	34" x 39" (864 x 991mm)
36" (915mm)	24" x 24" (610 x 610mm)	40" x 46" (1016 x 1168mm)

*Nominal Sizes (Compatible with other manufacturers' chutes).
Custom door and chute sizes available upon request - contact us for information.

CHUTES
PATENTED
CHUTES INTERNATIONAL™

(800) 88-CHUTE | (240) 448-5000 | CHUTES.COM

Due to TDR Systems, Inc.'s continuous improvement program, it reserves the right to change the design of the items shown here-in without prior notice. ©2018 TDR Systems, Inc.