



Installation Manual for the Vapor Station and Remote Stations



THINGS YOU WILL NEED BEFORE INSTALL



Tapcon screws for Concrete walls. 4-20



Anchor bolts for dry wall. 4-20

There is an install kit for the single remote hook up and the dual remote hook up.

Single Remote



Double Remote



Installing the Main Vapor Station

- Step 1. Locate the best position to mount your bracket
- Step 2. Using the bracket as your stencil, mark where you will be putting your holes into the wall.
- Step 3. Mount the bracket to the wall, once secured give it a tug to make sure it is tight to the wall.



- Step 4. On the back of the Vapor station, you will see 4 mounting posts. Place those 4 posts into the bracket openings and then let it slide into place.



- Step 5. Now that your Vapor Station is mounted to the wall, Fill the bottle inside, plug in the box and select your program (please see programing instruction). This unit has 5 programs.

Installing the Remote Station

Each Vapor Station box comes with its own bracket. Locate the best positing to mount each bracket. Please note that once you have introduced a remote station into the system, the main PLC will no longer spray vapor. If you are adding a station to hold more Odor control solution, you will only need one Vapor Station. If you are adding a Remote Station to spray directly into the Compactor or Trash Chute, you may need two Remote Stations. Please see your distributor for details.

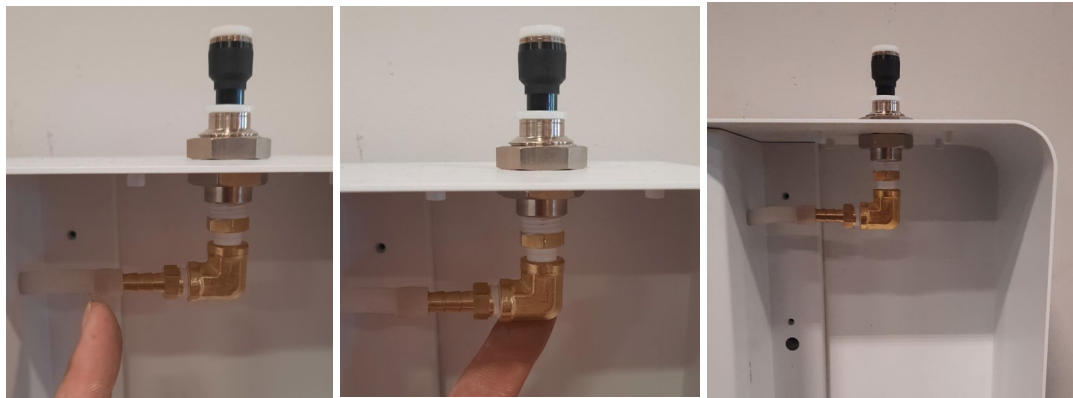


Repeat Steps 1-4

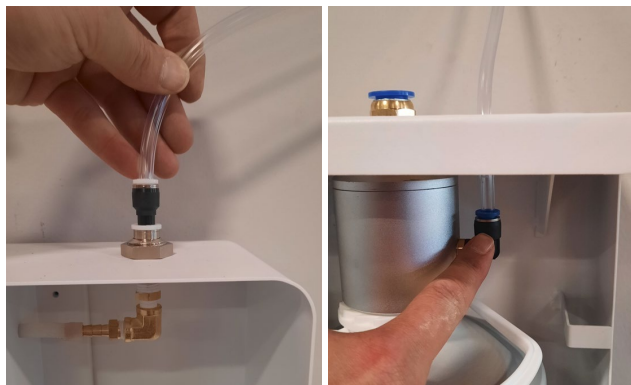
Step 5. On the main Vapor Station, Remove the air atomizer as shown.



Step 6. Using the L fitting, install this in place of the atomizer unit as show in picture.



Step 7. Using the install kit supplied hose, place it on top of the L fitting and run that hose to the Remote Station. (Max distance is 20 feet)

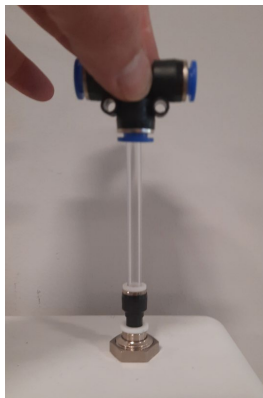


Step 8. Depending on your setup, If you are running a single remote station place the vapor spout on top of the remote box and you are done.

(Single Remote)



Step 9. Installing the Dual Remote Station. From the main PLC (Main Unit) Cut the Hose coming from the top of the L fitting minimum of 6 inches. Then Install the T-Fitting as pictured.



Step 10. From the T fitting, run hose to both remote stations as pictured below.



Step 11. When using two remote stations, bump the programming to preset 3 or custom set your run time to run longer than 10 second. Using two remote station requires more air pressure to build up. (see program instructions)

Step 12. If you are running one remote into the compactor, that remote station should be located as close to the machine as possible. Use the larger hose provided in the remote station box to terminate inside the compactor.

